

Dept. I YOUTH

Coloring Contest/Class, Group Projects/Welding/FFA, SkillsUSA

Dept. I

YOUTH COLORING CONTEST—

ONLINE ENTRY— COLORING PAGE FOR 2021 WILL BE AVAILABLE

(can mail coloring page to Butte County Fair Office or PO Box 308 Gridley, CA 95948 on or before August 22, 2021)

LATE ENTRIES WILL NOT BE ACCEPTED

NO Entry Fee

One per person

1st – 3rd Place Winners in Each Division:

Receive a FAMILY FUN PACK of 2 Adult Tickets & 2 Youth Tickets to the Fair.

DIVISION RULES –

1. Coloring Page is to be entered according to age of child.
2. Child's name **and** Parents name, phone # MUST be on the back of entry.

Division 529 – Color Page

CLASS:

1. Age up to 3
2. Age 4 – 6
3. age 7-9
4. Age 10-12
5. Age 12-18

YOUTH CLASS/GROUP PROJECTS —

Entry Fee: \$2.00 Per Entry
No Limits on Entries Per Class.

Judging:

This Division is judged by Danish system.

NO CASH AWARD, Ribbons Only

DIVISION RULES –

1. Entries must have been made by the entire class or a group within a class. No individual entry - see open youth sections for individual entries.
2. The group entries are done by entire class or entire group only (one entry with description) please state number in group so each person in the group will receive a ribbon.
3. If large item please specify size of exhibit in description selection of online entry.
4. All State and Local rules apply.

Division 530 – Pre K Class/Group

Division 531 – K – 5th Class/Group

Division 532– 6th – 8th Class/Group

Division 533– 9th – 12th Class/Group

CLASS:

1. Year Book (1 per school)
2. Murals
3. Newspaper/Paper
4. Quilt
5. Class Art Projects
6. Any Other, specify

Dept. I YOUTH

Coloring Contest/Class, Group Projects/Welding/FFA, SkillsUSA

WELDING PROJECTS—

Entry Fee: \$2.00 Per Entry

No Limits on Entries Per Class.

Judging:

Danish System of Judging

Premiums Offered Per Class:

1st \$1.50 2nd \$1.25 3rd \$1.00

Division 534 – Youth Welding

CLASS:

1. Welding, Large Projects, Any, specify
2. Welding, Small, Any, specify

Robot Design—

Individuals & Groups

Entry Fee: \$2.00 Per Entry

No Limits on Entries Per Class.

Judging:

Danish System of Judging

Premiums Offered Per Class:

1st \$1.50 2nd \$1.25 3rd \$1.00

DIVISION RULES -

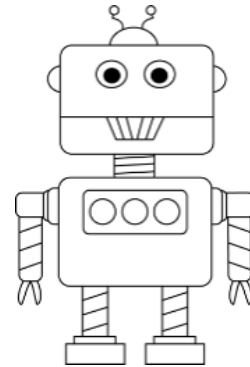
1. All exhibits must have been completed after August 2020.
2. ALL ROBOTS must be made by the child with minimal adult help.
3. Enter according to the grade in school on January 1, 2021.
4. Exhibit tags will be provided by the fair and will be attached at the time of receiving for display purposes. NO names should be on the entries.
5. Groups are 1-5 people the same grade.
6. No chemicals, fire or living things are to be a part of ANY ROBOT
7. The Butte County Fair reserves the right to REFUSE display items that are inappropriate for display at a family Fair.

DIVISION DEFINITIONS

- ❖ **MODELS** – Robots look like a robot but do not do anything. They are stationary
- ❖ **MOCK-UPS** – Robots look like a robot & they make sounds and/or have lights. They are stationary
- ❖ **PROTOTYPES** – Robots accomplish a simple or complex task. They have movement of some type.

Division 535 – Junk Robots, Individual Grades 1—3

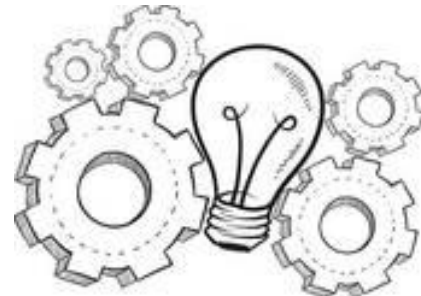
1. Grades 4—6 specify
2. Grades 7—8 specify
3. Grades 9—10 specify
4. Grades 11-12, specify



Division 536 – Junk Robots, Group,

CLASS:

1. Grades 1—3 specify
2. Grades 4—6 specify
3. Grades 7—8 specify
4. Grades 9—10 specify
5. Grades 11-12 specify



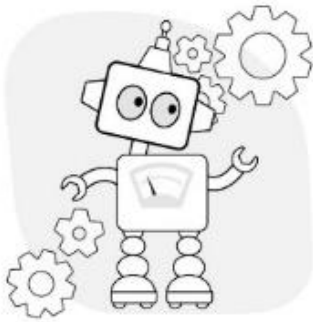
Dept. I YOUTH

Coloring Contest/Class, Group Projects/Welding/FFA, SkillsUSA

Division 537 – Robot Design, Any, Individual

CLASS:

1. Grades 1—3 specify
2. Grades 4—6 specify
3. Grades 7—8 specify
4. Grades 9—10 specify
5. Grades 11-12 specify



Division 538– Robot Design, Any, Group,

CLASS:

1. Grades 1—3
2. Grades 4—6
3. Grades 7—8
4. Grades 9—10
5. Grades 11-12

FFA, SKILLSUSA MECHANICS & AG SCIENCE



Entry Fee: **\$2.00 Per Entry**
No Limits on Entries Per Class.

**ROSETTE RIBBONS OFFERED 1st
through 3rd PER CLASS**



DIVISION RULES –

1. Exhibits must have been completed after August 2020 and not shown at a previous fair to be eligible for entry.
2. **PLANT SCIENCE**—Any subject relating to the production, health or propagation of plants. Exhibit shall not exceed 2'x2 1/2' in size. Parts labeling and description steps/stages shall be completed where they are applicable.
3. **VETERINARY SCIENCE**— Any subject relating to the production, health or propagation of small or large animals. Exhibit shall not exceed 2'x2 1/2' in size. Parts labeling, and description steps/stages shall be completed where they are applicable.
4. **ANY OTHER FFA AGRICULTURE SCIENCE PROJECT**—May include other projects such as Landscape Design, Floriculture, or Mechanics. Exhibit shall

Dept. I YOUTH

Coloring Contest/Class, Group Projects/Welding/FFA, SkillsUSA

not exceed 2'x 2 1/2'. Parts labeling and description steps/stages shall be completed where they are applicable.

5. All State and Local rules apply.

Division 539 – FFA, SKILLSUSA WELDING—large & small projects

CLASS:

1. Lg BBQ
2. Lg FIRE PIT
3. Lg TABLE
4. Lg BENCH
5. Lg ANY OTHER, SPECIFY
6. Sm 3-weld display, Steel
7. Sm 3-weld display, Aluminum
8. Sm 3-weld display, Stainless
9. Sm Any other welding, specify

Division 540 – FFA, SKILLSUSA ORNAMENTAL WELDING—large & small projects

CLASS:

1. Lg GARDEN ARCH
2. Sm PLANT STAND
3. Lg PLANT STAND
4. Lg PLASMA CUTOUT- HAND
5. Lg PLASMA CUTOUT - MACHINE
6. Sm TABLE
7. COPPER WORK, specify
8. Any Other Ornamental Welding, specify

Division 541 – FFA, SKILLSUSA WOODWORKING—large & small projects

CLASS:

1. Sm Cutting Board
2. Sm Pencil, Pen specify
3. Lg Furniture, specify
4. Sm Furniture, specify
5. Sm Yo-yo
6. Sm Water Fowl Calls, specify

7. Any other, Woodworking, specify

Division 542– FFA, AG SCIENCE/ VISUAL PRESENTATIONS

CLASS:

1. Plant Science, Any, specify
2. Veterinary Science, Any, specify
3. FFA, Ag Science Project, Any Other, specify

Butte County Fair 2021

