

OPEN YOUTH/Dept. I

OPEN YOUTH/DEPT. I

DEPARTMENT RULES -

1. *Open Youth* is open to youth at least 3 years of age by January 1, 2018 (except for the Color Page division).
2. Exhibitors are eligible to compete/exhibit through December 31st of the year in which they turn 19 years of age.
3. Each entry in these divisions shall have been made by or produced by the exhibitor.
4. All State and Local rules apply.
5. Entries shall be made online in Department I, Open Youth
6. All entries in Department I, OPEN YOUTH will be judged by the Danish System.
7. The Danish System of judging is based upon established standards of quality for each type of product.
8. Each exhibit is judged according to how well it meets that standard rather than how it compares with other exhibits.
9. There can be multiple 1st place, 2nd place and 3rd place winners.
10. "Any Other" classes are to be used only when the specific class is not offered.
11. No entries will be released early. All entries must remain on display for the duration of the Fair, unless otherwise specified.
12. Exhibitors limited to entries in one level: Beginner, Junior, or Senior or by grade level in each department.

FARM & GARDEN—Youth DEPT. I

Online Entry Closed: Thursday August 16th
Receiving – Tuesday, August 21—4 pm-7 pm
Judging – Wednesday, August 22—8:00 am
Release -Monday, August 27—10 am-5 pm

Deliver exhibits to the Feather Room

Entry Fee: \$1.00 Per Entry
No Limits on Entries Per Class.

Open Judging:

Public can view and listen *without comment*, to the OPEN JUDGING process. If this is not honored you will be asked to leave the building.

Premiums Offered Per Class:

1st \$1.50 2nd \$1.25 3rd \$1.00

DIVISION RULES –

1. All state and local rules apply.
2. Farm & Garden (agriculture and horticulture) products must be produced by the exhibitor.
3. Enter exact number of fruits, vegetables, etc., as specified in listing.
4. Variety of products must be adequately and correctly labeled.
5. If product is specified in bunches, bunches must be tied.
6. The management will not be responsible for the return of exhibits.
7. Exhibits shall not be more than one (1) year old and not have been shown at any previous Butte County Fair.
8. "Any Other" classes are for varieties that do not have a listed class. Please state variety when entering.
9. Specimen must be free of insects or they will be disqualified.
10. Specimen should be free of bruises and be uniform in size. are undesirable and should be avoided. Exhibits showing features which detract from the commercial value of any produce

Division 575 – Youth Farm & Garden

CLASS:

1. Any, List Type and Variety
2. Farmer's/Gardeners Choice Baskets, Please list all Farm & Garden produce used
 - A combination of at least 5 different varieties chosen from the previous classes attractively arranged in a suitable container.
 - The container must be provided by the exhibitor and must enhance the display.
 - A minimum of 3 different types must be used.

OPEN YOUTH/Dept. I

- Number of specimen per variety is dependent upon the size of the display.
- Judging will be based on total appearance color, texture, quality of specimen suitability of container and attractiveness of arrangement. All varieties used must be identified on produce list.
- Maximum size 16" X 32".

CLOTHING & TEXTILES—

Youth DEPT. I

Online Entry Closed: Friday, August 3rd
Receiving – Saturday, August 11—10 am – 5 pm
Judging - Clothing & Textiles – Tues., August 14—9 am
Release - Monday, August 27—10 am – 5 pm

Deliver exhibits to the Feather Room

Entry Fee: **\$1.00 Per Entry**

No Limits on Entries Per Class.

Judging:

Danish System of Judging

Premiums Offered Per Class:

1st \$1.50 2nd \$1.25 3rd \$1.00

DIVISION RULES –

1. All exhibits must be original and the work of the exhibitor. Exhibitors limited to entries in one level: Grade: K - 5th, Grade: 6th - 8th and Grade: 9th - 12th
2. Exhibits must have been completed after July 2017. Not shown at a previous Butte County Fair.
3. An exhibit may consist of 2 or more items not judged elsewhere. A coordinate exhibit is judged as one entry.
4. Exhibits must be cleaned and pressed. All hang able items must be on hangers.
5. All State and Local rules apply.
6. An coordinated exhibit may consist of 2 or more items not judged elsewhere. A coordinated exhibit is judged as one entry.

7. Exhibits must be cleaned and pressed. Put clothing that can hang, on hangers.

Division 529 – Beginner ages 9-10

Division 530 – Junior ages 11-12

Division 531 – Senior ages 13 & Over

CLASS:

1. Apron
2. Blouse or Shirt
3. Dress
4. Jacket or Vest
5. Pants or Shorts
6. Skirt
7. Coordinated Outfit, 2 or more items
8. Quilt, Any, specify
9. Needlework, Any, specify
10. Knitting, Any, specify
11. Crochet, Any, specify
12. Any Other Clothing Item, specify
13. Any Other Non-Clothing Item, specify
14. Pajamas/Nightgown
15. Duct Tape Clothing

Baking & Confections—

Youth DEPT. I

Online Entry Closed: Friday, August 3rd
Receiving – Wednesday, August 22—8 am – 12 pm
Judging - Baking, Candy – Wed. August 22—1 pm
Release - Monday, August 27—10 am – 5 pm

Deliver exhibits to the Feather Room

Entry Fee: **\$1.00 Per Entry**

No Limits on Entries Per Class.

Judging:

Danish System of Judging

Premiums Offered Per Class:

1st \$1.50 2nd \$1.25 3rd \$1.00

DIVISION RULES –

1. All entries in this division must be home-prepared by the exhibitor, no package mix.

OPEN YOUTH/Dept. I

2. Wrapping Instructions: **Bread** – zip-lock bag. Cut end toward bottom unopen end of bag. *No plate or cardboard.* **Biscuits, Rolls, Cookies, Confections** – on a small plate in a zip-lock bag. **Loaf, Pound or Layer Cakes** – on a card board base (not to exceed 1” beyond Cake. **Pies** – in a zip-lock bag. See Division for required amounts of product.
3. Entries must be accurately labeled on Bottom of bag, plate or cardboard.
4. The Fair will provide entry labels at the time of receiving the entry.
5. Entries that spoil during exhibit time will be removed from display. Entry card left in place.
6. Food requiring refrigeration may not be entered.
7. Bread: no mini loaves.
8. All entries will be tasted by judge.

Division 532 – Pre-Kindergarten

Division 533 – Grade K – 5th

Division 534 – Grade 6th – 8th

Division 535 – Grade 9th – 12th

CLASS:

1. Candy, 3 pieces + 1 piece
2. Cake, ½ cake + one slice
3. Cookies, 3 pieces + 1 piece
4. Muffins or Biscuits, 3 pieces + 1 piece
5. Quick Bread, ½ loaf + 1 slice
6. Yeast Bread, ½ loaf + 1 slice
7. Any Other specify, present example plus tasting piece.
8. Any Other cake , Decorated, on form, not tasted
9. Any Other item Decorated baked or candy

FOOD PRESERVATION— Youth DEPT. I

Online Entry Closed: Friday, August 3rd
Receiving – Saturday, August 11—10 am – 5 pm
Judging Food Preserved, Wed., August 22 -10 am

Release -Monday, August 27—10 am – 5 pm

Deliver exhibits to the Feather Room

Entry Fee: \$1.00 Per Entry
No Limits on Entries Per Class.

Judging:
Danish System of Judging

Premiums Offered Per Class:
1st \$1.50 2nd \$1.25 3rd \$1.00

DIVISION RULES –

1. All entries in these divisions must be home prepared and canned or packaged by the exhibitor after August 2017, using the correct heat process method for type.
2. All canning must be in glass jars designed specifically for canning purposes.
3. All canning must be in sealed jars using either hot water bath(high acid or sugar) or pressure canning (low or non-acid foods, vegetable, meats, fish). NO steam-canned or open kettle allowed.
4. All rings must be new and slightly loosened before putting entry on exhibit. No Paraffin Seals.
5. All low or non-acid fruits such as figs or low acid tomatoes must have lemon juice added, as directed by the USDA Guide to Home Canning.
6. All exhibits will be tasted during judging.
7. Two jars must be entered
8. Jars must be labeled on the side or bottom (not lid) prior to arrival at Fair. Label needs: name of product & process of canning (wbc or pc), date canned. No exhibitor name on

YOUTH: Ball® “Bring out your Best™” Food Preservation Award Program, presented by Newell Brands Inc. (see Department D for rules).

First Place

One (1) Six Dollar Coupon (\$6) for Ball® or Kerr™ Fresh Preserving Products
One (1) Free (Up to \$6 value) Coupon for Ball® pectin

OPEN YOUTH/Dept. I

Ball® “Bring out your Best™ “ Food Preservation Award Program, presented by Newell Brands Inc.

*Newell Brands Inc., Marketers of Ball® and Kerr™ Fresh Preserving Products, is proud to recognize today’s fresh preserving(canning) enthusiasts.

*An award for 1st place will be presented to the individual whose home canned entry is selected the best in the category.

*A panel of judges will select the top two entries in Fruits, Vegetables, Pickles, and Soft Spreads.

Entries must be preserved in Ball® Jars and sealed with Ball® and Bands specially designed for home canning, or

*preserved in Kerr™ Jars sealed with Kerr™ Lids and Bands specially designed for home canning.

*In addition entries in the soft spread category must be prepared using Ball® Pectin: Classic, Low or No-sugar, or Liquid.

*Proof of pectin purchase in the form of a receipt or product UPC must be submitted with entry.

Division 580 – Youth Ball® or Kerr™ Awards

CLASSES

1. Fruit
2. Vegetables
3. Pickles
4. Soft Spreads (jams, jellies, etc)

Division 536 – Grades K - 5

Division 537 – Grades 6 - 8

Division 538 – Grades 9 - 12

CLASS:

1. Dried Foods, specify
2. Fruit, specify
3. Jams, Jellies, Preserves, Any, specify
4. Vegetable, Any, specify
5. Pickles, Relish, Any, specify

FINE ARTS—Youth DEPT. I

Online Entry Closed: Friday, August 3rd

Receiving – Saturday, August 11—10 am – 5 pm

Judging - Fine Arts, Monday, August 13—12:30

Release -Monday, August 27—10 am – 5 pm

Deliver exhibits to the Feather Room

Entry Fee: **\$1.00 Per Entry**

No Limits on Entries Per Class.

Judging:

Danish System of Judging

Premiums Offered Per Class:

1st \$1.50 2nd \$1.25 3rd \$1.00

DIVISION RULES –

1. All exhibits in this department must have been completed after August 2017 and must not have been shown at any previous Butte County Fair.
2. ALL paintings and drawings are to be framed and ready for hanging,
3. FRAMES TO BE IN GOOD CONDITION.
4. Items will be moved by Fair staff. Fair is not responsible for damage.
5. Fragile or unstable items may be eliminated
6. ANY OTHER classes are for exhibits that do not fit in existing categories, please specify type when entering.
7. The MANAGEMENT reserves the right to remove any item not deemed appropriate for a family based Fair Fine Arts show

Division 539 – Grades Pre - K

Division 540 – Grades K - 5

Division 541 – Grades 6 - 8

Division 542 – Grades 9 – 12

CLASS:

1. Acrylic Paint, Any
2. Color Crayon, Any
3. Felt Tip Marker, Any
4. Ink Pen, Any
5. Pencil, Any
6. Oil Paint, Any
7. Watercolor Paint, Any
8. Any Other Medium, specify

OPEN YOUTH/Dept. I

CRAFTS & HOBBIES—Youth DEPT. I

Online Entry Closed: Friday, August 3rd

Receiving – Saturday, August 11—10 am – 5 pm

Judging - Fine Arts, Monday, August 13—12:30

Release -Monday, August 27—10 am – 5 pm

Deliver exhibits to the Feather Room

Entry Fee: **\$1.00 Per Entry**

No Limits on Entries Per Class.

Judging:

Danish System of Judging

Premiums Offered Per Class:

1st \$1.50 2nd \$1.25 3rd \$1.00

DIVISION RULES –

1. All exhibits in this department must have been completed after August 2017 and must not have been shown at any previous Butte County Fair.
2. Fragile or unstable items may be eliminated if difficult to properly display.
3. Exhibit tags will be provided by the fair and will be attached at the time of receiving for display purposes; names should still be on the **back** of entries.
4. Each entry in a class by the same exhibitor must be different in material and pattern.
5. “Any other” classes are for those items that do not fit into existing classes, please specify when entering.
6. Names are NOT permitted on front of artwork.
7. Label must be affixed to upper left-hand corner of the back of the entry showing ADDRESS, and PHONE #
8. All Visual Art work must be mounted on matte board. Use spray glue to adhere.
9. Legos need to be secure, if they fall apart the Fair cannot guarantee their return.

Division 543 – Pre – K

Division 544 – Grades K - 5

Division 545 – Grades 6 - 8

Division 546 – Grades 9 - 12

CLASS:

1. Candles, Any, specify
2. Ceramics, Any, specify
3. Computer Generated Art, Any
4. Christmas Decorations, Any, specify
5. Collections, Any, specify
6. Dough Art
7. Leather Craft, Any, specify
8. Lego Construct mounted on Wood
9. Lego Models, from Kits, well mounted
10. Lego Original Designs, well mounted
11. Photo Albums
12. Scrap-Book, 2 pages
13. Tole Painting, Any, specify
14. Wood Carving, Any
15. Any Other Craft or Hobby, specify
16. CA Missions
17. Models from Kits, Any
18. Duct Tape Craft, Any

PHOTOGRAPHY—Youth DEPT. I

Use No Velcro

Use No Double Stick Tape

Online Entry Closed: Friday August 4th

Receiving – Saturday August 11—10 am - 5 pm

Judging – Monday August 13—9 am

Release -Monday August 27—10 am – 5:30 pm

Deliver exhibits to the Feather Room

Entry Fee: **\$1.00 Per Entry**

No Limits on Entries Per Class.

Judging:

Danish System of Judging

Premiums Offered Per Class:

1st \$1.50 2nd \$1.25 3rd \$1.00

OPEN YOUTH/Dept. I

DIVISION RULES –

1. All exhibits in this department must have been completed after August 2017 and must not have been shown at any previous Butte County Fair.
2. No Photograph of identical subject matter may be entered in more than one class.
3. All youth entries are judged using the Danish system of judging.
4. All Color or Black & White photographs minimum size: 8" X 10", maximum size: 16" X 20." Maximum mat size 20" X 24".
5. Colored, proportional mat board may be used. MATS MUST BE SECURELY ATTACHED. If not, the exhibit will be refused entry.
6. Framed prints will not be accepted. No polaroid prints accepted.
7. The MANAGEMENT reserves the right to remove any item not deemed appropriate for a family based Fair Fine Arts show.
8. Label must be affixed to upper left-hand corner of the back of the entry showing, ADDRESS, and PHONE #.
9. Butte County Fair will not be responsible for any loss, broken, or damage to personal property of exhibitors.
10. Loose photos will not be accepted.
11. To enter the STATE PARKS PHOTOGRAPHY CONTEST: See ADULT FINE ARTS & PHOTOGRAPHY Dept G Photography for rules and awards.

Division 548 – Grade Pre-K

Division 549 – Grades K - 5

Division 550 – Grades 6 - 8

Division 551 – Grades 9 - 12

CLASS:

1. Black & White Enlargement
2. Color Enlargement
3. Mixed Media
4. Animals, Black & White
5. Animals, Color
6. General, Black & White

7. General, Color
8. People, Black & White
9. People, Color
10. Sports, Black & White
11. Sports, Color
12. Scenic, Black & White
13. Scenic, Color
14. Flowers, Black & White
15. Flowers, Color
16. Any Other, Black & White
17. Any Other, Color
18. Digitally Altered Photographs (include original photo in exhibit)
19. Sepia Tone, Any

MISCELLANEOUS PROJECTS—DEPT. I

Online Entry Closed: Friday, August 3rd
Receiving – Saturday, August 11—10 am – 3 pm
Release -Monday, August 27—10 am – 5 pm

Deliver exhibits to the Expo Hall

Entry Fee: \$1.00 Per Entry
No Limits on Entries Per Class.

Judging:
Danish System of Judging

Premiums Offered Per Class:
1st \$1.50 2nd \$1.25 3rd \$1.00

Division 552 – Youth Welding

CLASS:

1. Welding, Large Projects, Any, specify
2. Welding, Small, Any, specify

OPEN YOUTH CLASS/GROUP PROJECTS —DEPT. I

Online Entry Closed: Friday August 3rd
Receiving –Saturday, August 11—10 am - 5 pm
Release -Monday, August 27—10 am-5 pm

Deliver exhibits to the Feather Room

OPEN YOUTH/Dept. I

Entry Fee: \$1.00 Per Entry
No Limits on Entries Per Class.

Judging:
This Division is judged by Danish system.

NO CASH AWARD, Ribbons Only

DIVISION RULES –

1. Entries must have been made by the entire class or a group within a class. No individual entry - see open youth sections for individual entries.
2. The group entries are done by entire class or entire group only (one entry with description) please state number in group so each person in the group will receive a ribbon.
3. If large item please specify size of exhibit in description selection of online entry.
4. All State and Local rules apply.

Division 553 – Pre K Class/Group

Division 554 – K – 5th Class/Group

Division 555 – 6th – 8th Class/Group

Division 556 – 9th – 12th Class/Group

CLASS:

1. Year Book (1 per school)
2. Murals
3. Newspaper/Paper
4. Quilt
5. Class Art Projects
6. Any Other, specify

FLORICULTURE—DEPT. I

Youth use Open Youth Dept. I entry form

Online Entry Closed: Friday, August 10th

Receiving – Tuesday, August 21, 7 am—11 am, & 4 pm—8 pm

Open Judging – Thursday, August 23rd,
11:00am to done

Release – Monday August 27
8 am—1 pm & 4 pm—8 pm

Deliver exhibits to the Flower Bowl

Entry Fee: \$1.00 Per Entry
No Limits on Entries Per Class.

Premiums Offered Per Class:
1st \$1.50 2nd \$1.25 3rd \$1.00

CONTAINER GROWN PLANTS

DIVISION RULES –

1. Limit 6 entries per class.
2. Single specimen per container (unless noted otherwise)
3. Flowering plants must be in bloom

Division 557 – Flowering Plants

Division 558 – Foliage Plants

Division 559 – Cactus & Succulents

CLASS:

1. Any, specify
- 2.

FLORAL DESIGN—ARRANGEMENTS —TRADITIONAL & ARTISTIC

Online Entry Closed: Friday, August 10th

Receiving – Wednesday, August 22, 3 pm—8 pm,
& Thursday, August, 24—7 am – 9 am

Open Judging – Thursday, August 23rd,
11:00 am to done

Release – Monday August 27
8 am—1 pm & 4 pm—8 pm

Deliver exhibits to the Flower Bowl

Entry Fee: \$1.00 Per Entry

Premiums Offered Per Class:
1st \$1.50 2nd \$1.25 3rd \$1.00

OPEN YOUTH/Dept. I

DIVISION RULES –

1. Youth use Open Youth Department I entry form.
2. All arrangements must be in place by 9:30 a.m. on Thursday, August 23. Wilted arrangements will be removed. Exhibitor may “refresh” their arrangement. This is done before fair opening hours.
3. Dry arrangements will stay the duration of the Fair.
4. Flowers for arrangement materials need not be grown by the exhibitor, but arrangements must be made by exhibitor.
5. No artificial material or coloring permitted of fresh arrangements. Fresh material may be in water or wet oasis.
6. Accessories permitted. No flags.
7. Class titles are for inspiration and do not have to be followed literally.

Division 576 – K – 5th Grade Arrangements

Division 577 – 6th – 8th Grade Arrangements

Division 578 – 9th – 12th Grade Arrangements

Division 579 – All Grades, Miniature Arrangements

CLASS:

1. Secrets in the Garden
2. Butterfly Ball

Division 560 – Place Settings

CLASS:

1. Party Magic

DIVISION RULES –

1. Limited to first four (4) entries. ONE setting per person.
2. One Place Setting includes: Dishes, Glassware, Linens (place mats or cloth), Napkin, A Floral decorative unit.
UTENSILS ARE NOT ALLOWED.

3. The Floral decorative unit may contain fresh flower material. It must be in scale to total setting.
4. Flowers may be freshened daily before Fair opens.
5. Candy, Food, Cut Fruit, or Advertisements may NOT be used.
6. Must fit into a 24” X 24” space provided by the Fair.

NEW !!

In partnership with:



Robot Design—Models, Mock-ups, & Prototypes— YOUTH DEPT. I Individuals & Groups

DEFINITIONS:

Models: Robot is stationary and looks like a robot

Mock-ups: Robot is stationary but may make noise and lights might flash.

Prototypes: Robot is moving & doing something.

Online Entry Closed: Friday, August 3rd

Receiving – Saturday, August 11—10 am – 5 pm

Judging – Tues., August 14—10 am

Release -Monday, August 27—10 am – 5 pm

Deliver exhibits to the Feather Room

Entry Fee: \$1.00 Per Entry

No Limits on Entries Per Class.

Judging:

Danish System of Judging

OPEN YOUTH/Dept. I

Premiums Offered Per Class:

1st \$1.50 2nd \$1.25 3rd \$1.00

DIVISION RULES -

1. All exhibits must have been completed after August 2017.
2. JUNK ROBOT is unique, innovative & uses recycled old pieces and parts.
3. ALL ROBOTS must be made by the child with minimal adult help.
4. Enter according to the grade in school on January 1, 2018.
5. Exhibit tags will be provided by the fair and will be attached at the time of receiving for display purposes. NO names should be on the entries.
6. Each entry in a class by the same exhibitor must be different in material and pattern.
7. Groups are 1-5 people the same grade
8. No weapon or projectile designs.
9. No chemicals, fire or living things are to be a part of ANY ROBOT
10. ALL ROBOTS need to fit into a 3' X 3' X 4' space.
11. The Butte County Fair reserves the right to REFUSE display items that are inappropriate for display at a family Fair.

DIVISION DEFINITIONS

- ❖ **MODELS** – Robots look like a robot but do not do anything. They are stationary
- ❖ **MOCK-UPS**- Robots look like a robot & they make sounds and/or have lights. They are stationary
- ❖ **PROTOTYPES** – Robots accomplish a simple or complex task. They have movement of some type.

Division 561 – Junk Robots (Models), Individual Stationary.

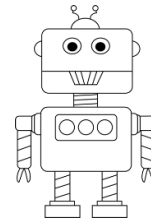
Division 562 – Junk Robots (Mock-Ups), Individual Stationary.

Division 563 – Junk Robot, (Prototypes), Individual, Moving

(required to submit a written explanation of WHAT the robot does & HOW you made it do that action)

CLASS:

1. Grades 1—3
2. Grades 4—6
3. Grades 7—8
4. Grades 9—10
5. Grades 11-12, Junk Robot



Division 564 – Junk Robots (Models), Group, Stationary

Division 565 – Junk Robots (Mock-Ups), Group, Stationary.

Division 566 – Junk Robots, (Prototypes) Group, Moving

(required to submit a written explanation of WHAT the robot does & HOW you made it do that action)

CLASS:

1. Grades 1—3
2. Grades 4—6
3. Grades 7—8
4. Grades 9—10
5. Grades 11-12



OPEN YOUTH/Dept. I

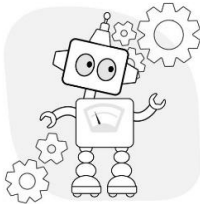
Division 567 – Robot Design, Any, (Models), Individual Stationary.

Division 568 – Robot Design, Any, (Mock-Ups), Individual Stationary.

Division 569 – Robot Design, Any (Prototypes), Individual, Moving (required to submit a written explanation of WHAT the robot does & HOW you made it do that action)

CLASS:

1. Grades 1—3
2. Grades 4—6
3. Grades 7—8
4. Grades 9—10
5. Grades 11-12



Division 570 – Robot Design, Any, (Models), Group, Stationary.

Division 571 – Robot Design (Mock-Ups), Any, Stationary.

Division 572 – Robot Design, Any (Prototypes), Individual, Moving (required to submit a written explanation of WHAT the robot does & HOW you made it do that action)

CLASS:

1. Grades 1—3
2. Grades 4—6
3. Grades 7—8
4. Grades 9—10
5. Grades 11-12

Division 573 – Brush-bots (Prototype), Individual Moving Competition. (Made from tooth brush)

DIVISION RULES -

1. All exhibits must have been completed after August 2017.
2. BRUSHBOTS must have a small motor and be able to move using their bristles.
3. BRUSH-BOTS can be home-made or from a purchased kit using a toothbrush.
4. BRUSHBOTS must be made by the student with minimal adult help.
5. All age groups will compete together in this Division.
6. Exhibit tags will be provided by the fair and will be attached at the time of receiving for display purposes. NO names should be on the entries.
7. BRUSH-BOTS entered will “race” other Brush-Bots.
8. BRUSH-BOTS can be plain or decorated.
9. There will be a “plain” race and a “decorated” race, IF 2 or more of each type are entered. If only one type is entered it will race against all others.
10. The race will happen during judging.

CLASS:

1. Grades 1—12, Brush-bot

YOUTH COLORING CONTEST—DEPT. I

ONLINE ENTRY— COLORING PAGE FOR 2018 WILL BE AVAILABLE AT THE FAIR OFFICE AND ONLINE.

Online Entry Closed: Tuesday August 21st

Receiving – Wednesday, August 22, 10 am— 4:30 pm

Release – Monday August 27 - 10 am – 4:30 pm

Deliver pages to the Feather Room—

(can mail coloring page to Butte County Fair Office or PO Box 308 Gridley, CA 95948 on or before August 22, 2018)

OPEN YOUTH/Dept. I

LATE ENTRIES WILL NOT BE ACCEPTED

NO Entry Fee

One per person

1st – 3rd Place Winners in Each Division:

Receive a FAMILY FUN PACK of 2 Adult Tickets & 2 Youth Tickets to the Fair.

DIVISION RULES –

1. Coloring Page is to be entered according to age of child.
2. Child's name **and** Parents name, phone # **MUST** be on the back of entry.

Division 596 – Up to 3 yrs. Old

Division 597 – 4 – 6 yrs. Old

Division 598 – 7 – 9 yrs. Old

Division 599 – 10 -12 yrs. Old

Division 600 – 13 - 18 yrs. Old

CLASS:

1. Coloring Contest Page

YOUTH STEPPING STONE DECORATION CONTEST— DEPT. I

ONLINE ENTRY— COLORING PAGE FOR 2018 WILL BE AVAILABLE AT THE FAIR OFFICE AND ONLINE.

Online Entry Closed: Friday, August 10TH

Receiving – Saturday, August 11th, 10 am—

4:30 pm

Release – Monday August 27 - 10 am – 4:30 pm

Deliver Stepping Stones to the Feather Room

NO Entry Fee

No Limit on Entries

1st – 3rd Place Winners in Each Division:

Receive a FAMILY FUN PACK of 2 Adult Tickets & 2 Youth Tickets to the Fair.

DIVISION RULES –

1. All Stepping Stones must be entered **ONLINE** before **DEADLINE**, Friday August 10th.
2. Stones need to be between 2-3” thick.
3. Stones need to be 12” X 12” minimum to 18” X 18” maximum.
4. Stones may be any shape as long as they are within the size range.
5. Child's name **and** Parents name, phone # **MUST** be on the back of entry.
6. Pre-Fabricated stones can be used as a base and then decorated.
7. Enter this contest according to age.

Division 601 – 6 and Under

Division 602 – 7 - 9 yrs. Old

Division 603 – 10 – 12 yrs. Old

CLASS:

1. Stepping Stone Contest